

Snap-on® Tools

SUMMER & **AUTUMN** **PROMOTION**



GRAB YOURSELF A **DEAL.**

WORKSHOP LIGHTING



ECSPA032EU

ARTICULATING DETAIL LIGHT EU

- LED lamp produces up to 300 lumen
- 18" flexi design to support adjusting at any angle
- Overmold design provides a comfortable grip
- Strong built-in magnet on the base enable hands-free use

 750:-



ECHDD012A

300 LUMEN NECK LIGHT WITH REMOVABLE LIGHTS

- Rechargeable 300 lm COB LED work light
- Place on neck or head for hands-free use
- Magnetic light heads are removable and can be placed on ferrous surfaces
- Lights are dimmable and independently adjustable
- Each light pivots for the perfect lighting focus

 950:-



ECPNE022U

BENT HEAD PENLIGHT UK & EU

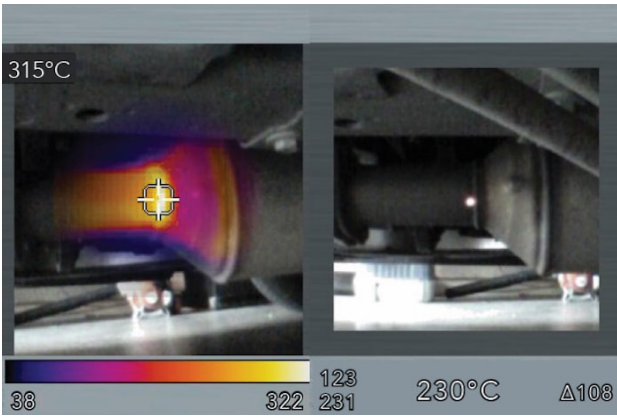
- Powerful output of main light reaches 425 lumens; spotlight provides 200 lumens of output
- Size: 220mm x 27mm

 675:-

EETHEU311A

THERMAL LASER

- Store hundreds of images internally
- Thermal laser function pinpoints exact location of the fault
- Laser readings from 18°C to 982°C
- Thermal image blending over camera
- 2.8" coloured display
- Ergonomic pistol grip



TWO-IN-ONE TOOL WITH THERMAL AND LASER MODE FOR TASKS SUCH AS CHECKING THE INLET AND OUTLET TEMPERATURES OF CATALYTIC CONVERTERS

THERMAL LASER MEASURES TEMPERATURES UP TO 982°C AND SHOWS "DELTA" VALUES WHEN THE LOWEST AND HIGHEST TEMPERATURE VALUES ARE CAST

THE THERMAL CAMERA SUPPORTS IMAGE MERGING AND DISPLAYS IMAGES IN CONTEXT

VISIBLE LIGHT CAMERA WITH STORAGE FOR HUNDREDS OF IMAGES

BUILT-IN LED LIGHTING

CONTROL TRIGGER FOR TAKING PICTURES AND SAVING HUNDREDS OF IMAGES



5 4995,-



CTCG8850DB

18 V MONSTERLITHIUM (TOOL ONLY)

CORDLESS CAULK GUN

 3995.-



**DISPENSES UP TO 400
TUBES OF CAULK ON A
SINGLE CHARGE!**

- High feed force to easily dispense material, even when cold
- Dispense rates from 2-18 inch/minute allows user to fine tune material dispensing
- Piston retracts automatically when trigger is released to stop material from dispensing—saves time and material
- Dispenses up to 400 tubes of caulk on a single charge
- Easily changes from one tube style to another to get the job done quickly
- 10 oz cartridge kit (included), optional kits available for 29 oz cartridge kit and 600 ml sausage kit
- Batteries and charger not included



POWERFUL, LIGHT AND QUIET!



REX25C

25 PC MULTISPLINE SCREW EXTRACTOR SET

- Made from special alloy steel for strength and long-lasting thread life
- Left-hand threads provide superior gripping power for removing damaged bolts, studs and screws
- Compact design for use in tight applications
- Designed for use with wrenches, ratchets and pliers
- Markings are stamped for easy identification
- Includes convenient storage tray

COMBINATION WRENCH FOAM SETS

COMES PRECISION FITTED IN RED ON BLACK FOAM PROVIDING ULTIMATE TOOL PROTECTION!

SOEXM02FMBR

6 PC 12-POINT METRIC FLANK DRIVE® PLUS COMBINATION WRENCH FOAM SET (20-25 MM)



SOEXM01FMBR

13 PC 12-POINT METRIC FLANK DRIVE® PLUS COMBINATION WRENCH FOAM SET (7-19 MM)



- Modular design provides in-drawer reconfiguration for new tools
- Easy to clean: closed-cell, cross-linked foam resist oils, solvents, and fuels
- Finger press feature at each end of tool for easy retrieval
- Die cut angle for nesting additional wrench sets
- Protects your investment and increases productivity
- Designed for maximum tool concentration on smallest possible footprint
- Flexible and expandable as tool collection evolves

- Protects your investment and increases productivity
- A continuous arc design distributes stress over the entire wrench opening radius for greater strength
- Forged steel and heat treat hardness provides a superior wrench with the proper strength and durability while reducing wear and breakage
- 7.5° offset broaching allows the user to flip the box end over to obtain a more advantageous grip on a fastener for restricted clearance areas

CHARGE & BOOST



EEJP12VUK

12 V LEAD-ACID ENGINE STARTER (BLUE-POINT®)

- Portable unit provides crank assist to stalled vehicles
- 68" long heavy 2-gauge cables remain flexible in extreme temperatures enabling ideal unit placement during starting
- Dual USB ports (1.1 A and 2.1 A) charges phones and small electronic devices
- 3 A built-in 110 V AC charger will not over-charge, to extend battery life, plug in when not in use with heavy-duty shop owned cord (not included)
- High-intensity LED light is perfect for dark underhood or night situations
- 425 Cranking Amps, 350 Cold Cranking Amps @ 12 V
- 12 V CLA supply to power accessories
- Digital display indicates internal battery voltage
- Clamps have a dual-molded grip and 1,000 A capacity



4495:-

ITCCST-CV

9PC COMMERCIAL COOL S KIT

- Takes less than 30 seconds to pump up to required pressure
- Quickly identifies leaks in the cooling system



4175:-



AT1070A

PENCIL DIE GRINDER (BLUE-POINT®)

- Twist-action variable-speed control
- 5' (1.5 m) long protected air hose
- Used with 1/8" shank grinding accessories rated a minimum of 75,000 RPM
- Ideal for tight spaces and easy cleaning of dies, rotors and brake pads



1725:-

VWB700B

8 PC CARBIDE BURR SET

- Includes (8 pc)
- Includes metal index
- Double-cut



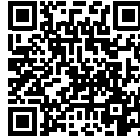
850:-

PLIERS & CUTTERS

612AEP

10" PISTOL GRIP NEEDLE NOSE PLIERS

- Angled handle for access to hard-to-reach areas
- Cushioned plastisol handles are designed for comfort and leverage to reduce fatigue; pistol-grip provides ergonomic gripping, pulling and twisting
- Axially placed pin pulling feature at tip of the pliers provides better gripping of smooth surfaced pins
- Perfectly aligned jaw tips feature machined rather than stamped teeth for precise gripping strength with positive control
- Machined, hardened teeth are sharp and strong like file teeth



695:-



450:-

HJ46ACF / G / O

6" TALON GRIP™ FLANKJAW™ SLIP-JOINT PLIERS

- FlankJaw™ geometry is designed to load away from the corners on hex nuts and bolts, allowing up to 30% more torque
- Smooth FlankJaw™ is optimized for grabbing 1/4-1" hex heads; will not destroy or round over the heads
- Talon Grip™ pliers provide up to a 57% increase in pulling power with a relocated joint and optimized handle shape
- Special cold forged steel, with a higher alloy content for greater durability and strength
- Shear cutter provides a smooth cut with minimal hand pressure
- Longer contoured cushion grip handle for increased comfort, control and leverage

AVAILABLE IN THESE COLOURS!





87ACF / G / O / DT / HV
7" VECTOREDGE DIAGONAL CUTTER

 **395:-**

AVAILABLE IN:



- Cold forged alloy steel ensures strength and durability for years of reliable performance
- Differential heat treatment produces strength and durability in specific locations to handle tough cuts
- VectorEdge tightly toleranced, induction-hardened, parallel cutting edges are engineered to provide repeated cuts of hard wire, soft wire, spring steel and cable ties at all locations along the blades
- Cushioned plastisol handles for comfort and leverage to reduce fatigue

PL600ES1RKMB / DT
6 PC ESSENTIAL PLIERS/ CUTTERS SET

- 87ACF + 97ACF + 46ACF + 47ACF + 85ACF + KAPL10 (10" Pliers Organizer)
- Talon Grip™ pliers provide up to 57% increased pulling power with a relocated joint, optimized handle shape and diamond-serrated jaws

AVAILABLE IN:



 **3275:-**



6 PC ESSENTIAL PLIERS/ CUTTERS FOAM SETS

PL600ES1FHV / G / R / O

- 87ACF + 97ACF + 46ACF + 47ACF + 85ACF + 95ACF + Foam organizer
- Includes (2) diagonal cutters, (2) needle nose pliers and (2) slip joint pliers in a foam organizer

AVAILABLE IN:



 **3150:-**

PL600ES2FO / R / G

- 911ACF + 388ACF + 29ACF + 312CF + 61CF + PWCS7ACF + Foam organizer
- Set includes (2) diagonal cutters, (1) needle nose pliers, (1) duck bill pliers, (1) wire stripper crimper and (1) terminal crimping tool in a foam organizer

AVAILABLE IN:



- Modular foam organizer provides in-drawer reconfiguration for new tools
- Each tool is precision fitted providing ultimate tool protection
- Contrasting colors make it easy to spot missing tools
- Closed cell cross-linked foam resists oils, solvents and fuels and is easy to clean



 **3995:-**

PL600ES2RK / O / BK

6 PC ESSENTIAL PLIERS/ CUTTERS/ CRIMPERS SET

- Talon Grip™ pliers provide up 57% increased pulling power with a relocated joint, optimized handle shape and diamond-serrated jaws
- 911ACF + 388ACF + 29ACF + 312CF + 61CF + PWCS7ACF + KAPL10 (10" Pliers Organizer)

AVAILABLE IN:



S 3050:-

SNAP RING PLIERS SETS



SRPCR105G

5 PC SNAP RING PLIERS SET

- Includes (3) straight tip and (2) angle tip (.030-.070") in a tray
- SRPCR3800G + SRPCR4700G + SRPCR38090G + SRPCR7000G + SRPCR7090G + Tray

S 1300:-

SRPCR107 / G / O

7 PC SNAP RING PLIERS SET

- Includes (3) straight tip and (4) angle tip (.030-.090") in a tray
- SRPCR3800 + SRPCR4700 + SRPCR7000 + SRPCR7090 + SRPCR9045 + SRPCR9090 + SRPCR7045 + Tray

AVAILABLE IN:



S 1875:-



- Convert from internal to external rings with push-button quick-release design; up to 80% faster than previous SRPC design
- Natural steel finish has a tough clear coating to help protect against corrosion
- Wide cushion grip provides increased comfort and control
- Manufactured from special cold forged steel with a higher alloy content for greater durability and strength
- Longer 45° and 90° jaws for easier access to hard-to-reach retaining rings



SRPCR112MB / DT

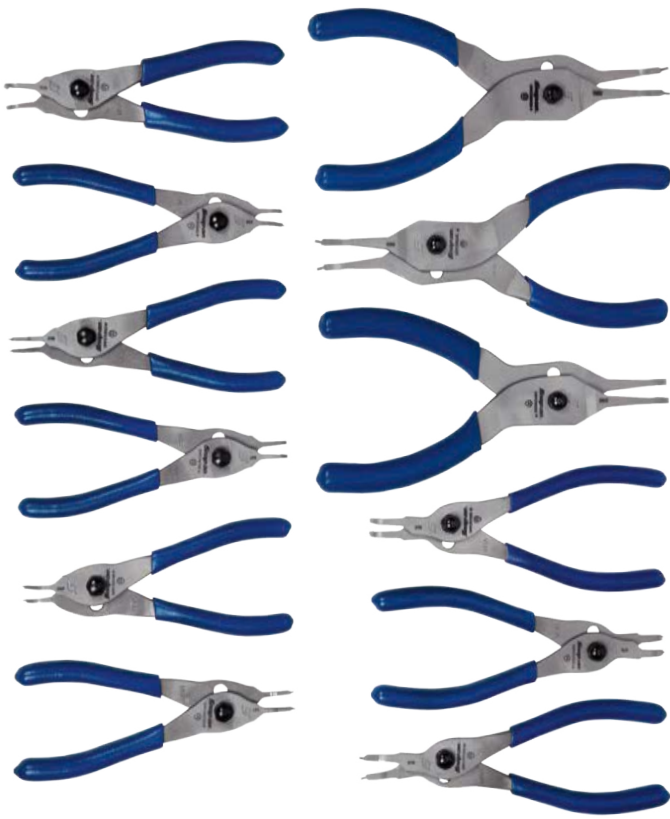
12 PC SNAP RING PLIERS SET

- Includes (4) straight tip, (4) 45° tip and (4) 90° tip in a molded case with foam insert for better tool storage and security
- SRPCR7000 + SRPCR4700 + SRPCR4745 + SRPCR7045 + SRPCR9090 + SRPCR3800 + SRPCR9045 + SRPCR9000 + SRPCR3890 + SRPCR3845 + SRPCR7090 + SRPCR4790
- Convert from internal to external rings with push-button quick-release design; up to 80% faster than previous SRPC design
- Natural steel finish has a tough clear coating to help protect against corrosion
- Wide cushion grip provides increased comfort and control
- Manufactured from special cold forged steel with a higher alloy content for greater durability and strength
- Longer 45° and 90° jaws for easier access to hard-to-reach retaining rings

AVAILABLE IN:



3895:-



Blue-Point®

BPL501

5 PC PLIERS AND CUTTER SET

- B48CP + B58HLP + B96CP + BAWP100 + B87CP
- Includes (1) slip joint pliers, (1) lineman's pliers, (1) needle nose pliers, (1) adjustable joint pliers and (1) diagonal cutter in a storage tray



925:-



BMPL1000

10 PC MINIATURE PLIERS AND CUTTERS SET

- B945CMP + B960CMP + B95CLMP + B95CMP + B75CMP + B45CMP + B65CMP + B85CMP + B85CTMP + BMPEC5
- Includes (1) slip joint pliers, (1) lineman's pliers, (1) needle nose pliers, (1) adjustable joint pliers and (1) diagonal cutter in a storage tray



975:-

TH216

COPPER/ HIDE HAMMER #4 2380G

- Malleable Iron head fitted with one Rawhide and one Copper cylindrical face.
- The malleable Iron head and the Copper/Rawhide faces combine to provide the weight for the blow and the faces prevent damage to most items being struck.
- Ideal where a heavy blow is required combined with a relatively small striking area.
- Faces are designed to wear and can be replaced.
- Used as a multi purpose soft faced hammer in engineering and automotive for assembly, repair and maintenance.



675:-

CHISELS, PUNCHES & PRYBARS



PPVP70BK

7 PC MIDGET PUNCH AND CHISEL SET



1250:-



PPC710BK

11 PC PUNCH AND CHISEL SET



1975:-



PPC715BK

16 PC PUNCH AND CHISEL SET



2850:-

SPDC18R / O

DEMOLITION 18" CHISEL

- 3/4" square bar with precision ground flared tip, manufactured from special alloy steel, forged and heat-treated for optimum strength and durability



AVAILABLE IN:



850:-

2050

20" PRYBAR

- Rolling head acts as fulcrum and provides leverage
- Pointed end is useful in many aligning applications



775:-

SPBS704A / MB

20" PRYBAR

- includes 8, 12, 18 and 24"
- Blade features a precision-ground edge, with angled design for maximum leverage while lifting and pulling on bar
- Manufactured from special alloy steel, precision forged and heat-treated for optimum strength and durability
- Industrial finish helps protect against corrosion
- Durable, ergonomic tapered handle offers a comfortable grip and withstands extreme work environments
- Blade extends through the handle and contacts the metal end cap, providing a continuous, solid, striking force
- Flared end of handle offers protection from off-center handle strikes



1695:-

AVAILABLE IN:



Blue-Point[®]



425:-

2420A

20" PINCH PRYBAR

- Pinch prybars are used to align, adjust and move material, angled chisel end for extra leverage when prying
- Pinch prybar has a tapered point on one end and a chisel type edge on the other end
- 15/16" edge, 3/4" stock, 20" overall length



275:-

7031A

16" CLOSE QUARTER PRYBAR

- Powerful leverage where space is at a premium
- Ideal for aligning molds



ATHUBSCRUBLG

LARGE TRUCK HUB SCRUBBER

- Quickly and effectively remove rust and debris from hub surfaces
- 1/2" drive allows for use with an impact gun—simply attach like any standard impact socket =
- High quality tool sculpted from aircraft grade aluminum
- The majority of hub cleaning tool products on the market require use with an air or cordless drill
- Enhances shop productivity by not having to change from an impact to a drill and back to an impact
- Improves wheel assembly with better torquing against a clean surface and improving balance by removing rust, dirt and other foreign materials from the lug threads, hub surface

 **850:-**

 **375:-**

ATHUBSCRUBLGPADS

REPLACEMENT TRUCK PADS, 4 PK

- Fits 22 mm stud size on large trucks

PK500A

3 PC PUTTY KNIVES/ SCRAPERS

- Includes (3) putty knives

 **425:-**


SCREWDRIVER SETS



SGDX60RATR / G

7PC COMBINATION & RATCHETING SCREWDRIVER SET

- 6pc set includes 3 flat tip screwdrivers and 3 PHILLIPS® tip screwdrivers with storage tray
- Ratcheting screwdriver includes SDM211B (3/16") and SDM213B (9/32") Flat Tip bits plus SDM221IRB (#1), SDM222IRB (#2) and SDM223IRB (#3) PHILLIPS® ACR® bits

 1850:-



AVAILABLE IN:



SGDX80BR / G / O

8 PC INSTINCT® SOFT GRIP COMBINATION SCREWDRIVER SET

- Includes (5) flat tip, plus (3) PHILLIPS® ACR® tip drivers in a storage tray
- Wide tri-lobe design in the center of the handle and Snap-on® bolstered, special alloy steel blade supply turning power when needed
- Tip identifier on the crown helps to quickly identify the needed tool
- Round neck and six specially designed curves and flutes provide fingertip control, aid in spinning and prevent the tool from rolling on flat surfaces
- Soft grip handles provide increased comfort and control while resisting most shop solvents
- Nickel-chrome plating helps protect against corrosion and promotes easy cleanup



AVAILABLE IN:



 1395:-

SGDMRC31RK

STUBBY RATCHET METRIC SCREWDRIVER SET

- Ideal set for applications where space is at a premium
- Stubby ratcheting screwdriver accepts interchangeable stainless steel shanks with strong magnetic bit retention (2" and 3-3/4" L included)
- Smooth ratchet action with forward/reverse lock mechanism
- Set includes (8) 1/4" drive sockets (5-13 mm), (6) metric hex bits (2-6 mm), (8) TORX® bits (T9-T40), (2) flat bits, (3) PHILLIPS® ACR® bits and (1) 1/4" hex-to-1/4" square adaptor in a storage case



1650:-



Blue-Point®



CTS561BITXL

14 PC 6" POWER BIT SET

- Additional length provides greater access and minimizes drill contact with work surface
- Power bits made from tough S2 steel
- T8, T10, T15, T20, T25, T27 and T30
- PHILLIPS® #1, #2 and #3, Square #1 and #2
- SDM611 stainless steel adaptor with magnetic retention
- Includes CTS561BITCS indexable case



475:-



- Includes THLD72 & FHLD80
- Engraved with limited edition 100 Year Anniversary stamp

THD72MP / R / HV / MB / DT
1/4" DRIVE DUAL 80® TECHNOLOGY HARD GRIP MULTIPOSITION HEAD RATCHET

5 1425:-

- Three-in-one ratchet that functions as a fixed-head and offset-head ratchet and as speeder
- Ratchet head indexes at 16 positions across 240° for better access to fasteners around blind corners
- 360° crank rotation speeder function for fast bolt tightening or loosening in constrained work areas
- Dual 80® technology features six teeth engaging the gear for added strength and durability
- 72 teeth and dual pawls for minimum swing arc while maintaining maximum strength and durability
- sealed head keeps lubricants in and contaminants out for longer life



AVAILABLE IN:



124STTMM
24 PC 1/4" DRIVE 6-POINT METRIC FLANK DRIVE® SHALLOW/ DEEP SOCKET SET

- Includes TMM5-TMM16 shallow and STTMM5-STTMM15 deep sockets (5-15 mm) in magnetic storage tray

5 3650:-

212EFTXY
12 PC COMBINATION TORX® BIT STANDARD SOCKET SET

- Includes (5) 1/4" drive TORX® drivers (TTX8E-TTX25E), plus (6) 3/8" drive TORX® drivers (FTX27E-FTX55E) and (1) 3/8" drive FTX47E GM®-style driver (T47) in a magnetic storage tray



5 2895:-





237HEXTORXST

37 PC COMBINATION DRIVE SOCKET DRIVER SET

- Up to 20% stronger than 1 pc bit designs and up to twice ANSI® proof load
- Heat-treated for strength and durability
- Precise fit to fasteners and multiple detents for secure drive attachment

Includes:

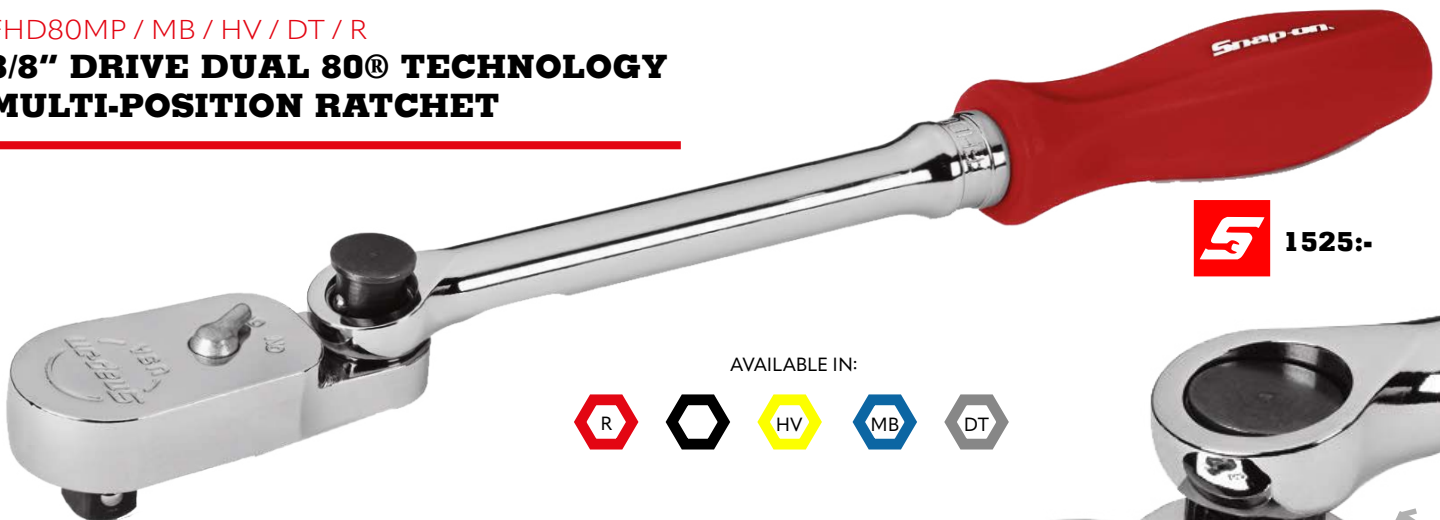
- (5) 1/4" Drive Standard TORX® Bit Sockets
- (7) 3/8" Drive Standard TORX® Bit Sockets
- (7) 3/8" Drive Stubby TORX® Bit Sockets
- (3) 3/8" Drive Triple Square Drivers
- (7) 3/8" Drive Metric Hex Bit Sockets
- (4) 1/4" Drive Stubby Metric Hex Bit Sockets
- (4) 3/8" Drive Stubby Metric Hex Bit Sockets



7495:-

FHD80MP / MB / HV / DT / R

3/8" DRIVE DUAL 80® TECHNOLOGY MULTI-POSITION RATCHET



1525:-

AVAILABLE IN:



- Ratchet head indexes 16 positions across 240° for better access to fasteners around blind corners
- Three-in-one ratchet that functions as an offset fixed-head ratchet, conventional straight ratchet and as a 360° speeder ratchet
- Push/Pull speeder function for fast bolt tightening or loosening in constrained work areas
- 360° crank rotation speeder function for fast bolt removal
- Dual 80® Technology features seven teeth engaging the gear for added strength and durability
- 80 teeth and dual-pawls for minimum swing arc while maintaining maximum strength and durability
- Sealed head keeps lubricants in and contaminants out for longer life





203FXWKL

3 PC 3/8" DRIVE LOCKING WOBBLE EXTENSION SET



1175:-

- Quick-release sleeve allows easy socket application and removal
- Locking design offers superior socket retention when compared to standard ball detent versions provides 8X the retention strength

- Knurled sleeve provides a good gripping surface especially in oily or greasy environments
- Wobble design provides 16° of clearance; important when working in tight engine compartments
- Includes FXWKL3, FXWKL6 and FXWKL11 in a storage tray

204PFSXEBR

4 PC 3/8" DRIVE EXTERNAL TORX® POWER SWIVEL EXTENSION SOCKET FOAM SET (E8-E14)

- Great for difficult access where the use of one tool works better than three (socket, swivel and extension)
- 30° uninterrupted swivel action means greater accessibility in tight quarters, allowing for easier, faster removal of stubborn fasteners, thus saving time
- Laser-welded pivot pin allows smooth, full 30° swivel action for efficient power transfer at any angle with no loss in torque output, prolonging the life of the socket
- Spring-loaded adjustable swivel pre-positions the socket for quick accessibility
- Socket end is manufactured to exact tolerances with a shallow lead-in countersink which ensures a tight fit to regular height and low profile fasteners reducing the chance of slippage or damage



2895:-

Blue-Point®

FLLX80

3/8" DRIVE DUAL 80® EXTRA-LONG HANDLE LOCKING FLEX RATCHET



- Dual 80® Technology ratchet design features 80-tooth gear, with seven teeth in contact with gear to provide strength and durability
- Sealed head keeps lubricants in and contaminants out for longer life

- Longer reach, increased leverage
- Contoured handle for comfort and control
- Chrome finish for easy cleanup
- Rugged reverse lever increases tool longevity

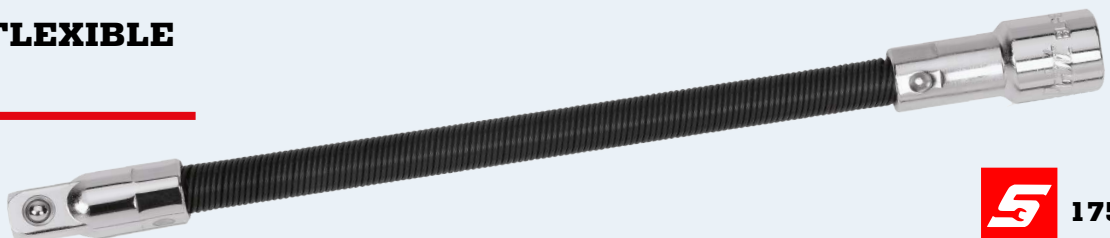


1650:-



BLPEXTF388

3/8" DRIVE 8" FLEXIBLE EXTENSION



175:-

206ESSPKPLG2

6 PC 3/8" DRIVE ESSENTIAL #2 SPARK PLUG SOCKET SET

- Spark plug extends through the socket for access in tight quarters
- Snap-on® sockets using the Flank Drive® wrenching system grip the fastener on the flanks/flats which deliver 15–25% more turning power
- Rubber insert for secure retention of spark plug



 2575:-

207EFAMY

7 PC 3/8" DRIVE METRIC HEX BIT SOCKET SET (4-10 MM)

- Includes FAM4E-FAM10E (4-10 mm) in a magnetic storage tray

 1375:-



 1925:-

212FSMSY

12 PC 3/8" DRIVE 6-POINT METRIC FLANK DRIVE® SEMI-DEEP SOCKET SET (8-19 MM)

- Includes FSMS8–FSMS19 (8–19 mm) in magnetic storage tray



 1995:-

212FMSY

12 PC 3/8" DRIVE 12-POINT METRIC FLANK DRIVE® SEMI-DEEP SOCKET SET (8-19 MM)

- Includes FMS8–FMS19 (8–19 mm) in magnetic storage tray

224SFFSM

**24 PC 3/8" DRIVE
6-POINT METRIC FLANK
DRIVE® SHALLOW/ DEEP
COMBINATION SOCKET SET**

- Includes FSM81-FSM191 (8-19 mm) shallow sockets and SFSM81-SFSM191 (8-19 mm) deep sockets (8-19 mm)



207RIPFM

**7 PC 3/8" DRIVE 6-POINT
METRIC LOW PROFILE SWIVEL
IMPACT SOCKET SET (10, 12-
15, 17 AND 18 MM)**

- includes RIPFM10C, RIPFM12C-RIPFM15C, RIPFM17C and RIPFM18C (10, 12-15, 17 and 18 mm)
- Sockets using the Flank Drive® wrenching system grip the fastener on the flanks/flats, delivering 15–25% more turning power



- Pin collar eliminated with new proprietary pin-welding process
- Laser-welded pivot pin reinforces socket wall and allows 30° of smooth, uninterrupted action for efficient power transfer at any angle and greater accessibility in tight quarters



2395:-

214SIMDFMYA

**14 PC 3/8" DRIVE 12-POINT METRIC FLANK DRIVE®
DEEP IMPACT SOCKET SET (8-19, 21 AND 24 MM)**



- Includes SIMDFM8A-SIMDFM19, SIMDFM21 and SIMDFM24 (8-19, 21 and 24 mm) in a magnetic storage tray
- Snap-on® impact sockets are heat-treated to optimize impact service life with a lower hardness than hand sockets and are able to withstand repeated cycling loads of impact wrenches
- Snap-on uses a proprietary blend of special alloy socket steel that provides long life and great strength

IMPACT WRENCHES



PT850HV

1/2" DRIVE AIR IMPACT WRENCH (HI-VIZ)

- 1,190 ft-lb (1,613 N·m) bolt breakaway torque and 810 ft-lb (1,098 N·m) working torque
- 1,270 BPM and 9,200 RPM free speed for faster bolt removal
- Forged anvil, frame and hammers for a long tool life
- Cushion grip handle absorbs vibration and insulates the user's hand in cold temperatures
- Balanced ergonomic design and slow anvil start-up for greater tool control
- One-handed forward/reverse lever for user convenience
- Large dial type regulator knob



5250:-

MG725A

1/2" DRIVE HEAVY-DUTY AIR IMPACT WRENCH (RED)

- 1,190 ft-lb (1,613 N·m) of bolt breakaway torque and 810 ft-lb (1,098 N·m) of working torque
- Faster motor start-up and greater performance with more torque than previous model
- Balanced design for superior control and less user fatigue
- Patented cushion-grip handle reduces vibration
- Patented cushion grip tip valve trigger provides comfort and greater tool control
- Anvil stops with release of the trigger to prevent throwing fasteners
- Easy turn regulator for convenient speed control
- Weighs 4.8 lb (2.2 kg)
- Twin hammer impact mechanism is durable and hard hitting
- Sealed in oil bath lubrication with Red Line Synthetic Oil always keeps impact mechanism lubricated for less wear
- For the toughest jobs, choose the maximum power of the MG725A



4550:-



SKF80A

1/2" DRIVE DUAL 80® TECHNOLOGY STUBBY HANDLE FLEX-HEAD RATCHET



1475:-



- Dual 80® Technology ratchet design features 80-tooth gear with seven teeth in contact with gear to provide strength and durability
- Flex-head design allows exceptional versatility
- Stubby handle provides access in tight applications
- Sealed head keeps lubricants in and contaminants out for longer life
- Contoured handle for comfort and control
- Chrome finish for easy cleanup
- Rugged reverse lever increases tool longevity
- Provides access and leverage to difficult-to-reach fasteners located in tight spaces



305SXWP

5 PC 1/2" DRIVE WOBBLE PLUS EXTENSION SET

- Set contains five Wobble Plus extensions 2, 3, 5, 8 and 11" in storage tray



1675:-



1695:-



310SWMYA

10 PC 1/2" DRIVE 12-POINT METRIC FLANK DRIVE® SHALLOW SOCKET SET (10-19 MM)

- Includes SWM101A–SWM191 (10–19 mm) in storage tray



2375:-



313SWMYA

13 PC 1/2" DRIVE 12-POINT METRIC FLANK DRIVE® SHALLOW SOCKET SET (12-24 MM)

- Includes SWM121A–SWM241 (12–24 mm) in storage tray



5 775:-

AST6118
1/2" TORX IMPACT SET 6PC

- AST6118 TRX-Star socket set is suitable for torx head fasteners which are widely used in the automotive industry and can be found in a number of applications, including Cylinder Head Bolts, Flywheel Bolts, Drain Plugs, Brake Caliper Bolts and Suspension Components.
- Sizes T55, T60, T70, T80, T90, T100
- Length 40mm - 1/2" drive
- Suitable for German vehicles including BMW, Mercedes Benz, Porche and VW / Audi Group.

Blue-Point®



STA8RIBE
8 PC 1/2 DRV RIBE BIT SET

- Contains R6-14 socket bits

5 625:-



ITC5028A
9C COMMERCIAL HUB NUT SOCKET SET

- Contains a range of sizes from 30 - 41mm
- Great for light commercials!

5 1725:-



ITC5027A
5 PIECE HUB NUT IMPACT SOCKET SET

- For use on many types of vehicles, Audi, Skoda, BMW, Mercedes-Benz, Volkswagen, Ford Citroen, Renault, Toyota, Vauxhall, Fiat, Nissan, Subaru, Seat
- Five hub nut sockets in one set
- Manufactured from Chrome Molybdenum for strength
- Improved torque and wear properties

5 1100:-

 2150:-

310SIMMYA

**10 PC 1/2" DRIVE 6-POINT
METRIC FLANK DRIVE®
DEEP IMPACT SOCKET SET
(10-19 MM)**

- Includes SIMM100A-SIMM190 (10-19 mm) in a storage tray



 2250:-



315IMDMYA

**15 PC 1/2" DRIVE 12-POINT
METRIC FLANK DRIVE®
SHALLOW IMPACT SOCKET SET
(10-24 MM)**

- Includes IMDM100A-IMDM240A (10-24 mm) in a storage tray

325SIMM

**25 PC 1/2" DRIVE 6-POINT
METRIC FLANK DRIVE®
DEEP IMPACT SOCKET SET
(10-27, 29-36 MM)**

- Includes SIMM100A-SIMM270 and SIMM290-SIMM360 (10-27, 29-36 mm) in a storage tray



 7495:-

Snap-on Tools

**SUMMER
&
AUTUMN
PROMOTION**



PLEASE CONTACT:

Meka Amerikanskt
0704-521000
mekaamerikanskt@gmail.com

Kampanjen gäller t.o.m. 2023-09-30
med reservation för ev. slutförsäljning.
Alla priser exkl. moms.